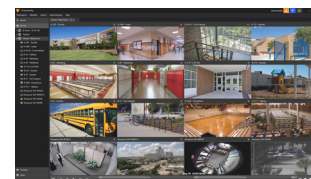


# Comparison Data Sheet

The New Video Insight 7 is our biggest release ever. Redesigned from the ground up to provide enhanced performance and stability, maximize scalability and offer new premium functionality for key vertical markets. VI 7 is aimed at making the entire video management suite more intuitive, more powerful and easier to use.



Below is a comparison between version 7 Enterprise and Express.

VIDEO INSIGHT VERSION	VERSION 7 ENTERPRISE	VERSION 7 EXPRESS
<b>CAPABILITIES OF WINDOWS CLIENTS</b>	<b>VI MonitorPlus</b>	<b>VI MonitorPlus</b>
Live Video Monitoring	✓	✓
Access to Recorded Videos and Clipping	✓	✓
Facility Maps with Camera and Door Functionality	✓	✓
PTZ Control	✓	✓
Access Control Integration	✓	✓
Custom View Management	✓	✓
Guard Tour & Reporting	✓	✓
Media Player with Video tamper Detection	✓	✓
Synchronized Playback for Multi-Camera Viewing	✓	✓
Variable bitrates Controls for Optimization of Bandwidth	✓	✓
Audio Playback and Recording Functionality (For Compatible Cameras)	✓	✓
360 Camera De-warping Functionality	✓	✓
Rules Manager functionality	✓	✓
User Level Management	✓	✓
Storage Management	✓	✓
System Log Reports for All Events in VI	✓	✓
Logs Exporting In PDF, XPS, & TXT Format	✓	✓
Web-Page as Camera View Capability	✓	✓
Video Bookmarking Support	✓	✓
Workspaces: Multi-Tasking Tabs	✓	✓
Full Access Control Dynamic Menu for Facility Maps.	✓	✓
I-VMD Analytic Integration	✓	✓
Dynamic Menu Bars	✓	✓
Full Hardware Acceleration Support for Improved Video Playback Via 3rd Party GPUs	✓	✓
Live Camera View Sharing with Messaging	✓	✓
Improved Ability to Share Live Camera Views and Layouts through Video Wall	✓	✓
Increased Optimization Setting Options	✓	✓
Smart Search Via Region of Interest	✓	✓
Motion Search & Motion Logs	✓	✓
Workspace Home Screen with Custom Quick Launch Options	✓	✓
Enhanced Timeline with Motion vs Fulltime Recording Indication	✓	✓
Panasonic Body Camera Integration	✓	✓
Action Center: For all Recorded Videos, System Logs, and Alert Notifications	✓	✓
Streamline UI	✓	✓
Enhanced Camera Cycle Layout Functionality	✓	✓
MP4, AVI, and EXE Video File Format Support	✓	✓
Custom Application Plugins: IE LPR, Transportation, FacePRO and More.	✓	-
Panasonic NVR Integration: Live & Recorded Playback Support for WJ-ND400, NV300, NV200, & NX Series	✓	-
<b>CAPABILITIES OF VIDEO INSIGHT IP-SERVER</b>	<b>VI IP SERVER</b>	<b>VI IP SERVER</b>
Cameras Management Support	UNLIMITED CAMERAS	32 CAMERAS MAX
Health Monitor Cloud	✓	✓
Full Virtual Machine Compatibility	✓	✓
IP Server Backward Compatibility		-
IP Server Forward Compatibility	✓	✓
Fully Redesigned System Architecture	✓	✓
Full H.265 Compression Support	✓	✓
Requires IP Server License	✓	{Free}
<b>INCLUDED CLIENTS</b>	<b>VERSION 7 ENTERPRISE</b>	<b>VERSION 7 EXPRESS</b>
Includes Mobile IOS, Android, & Web Viewing Clients	✓	✓
Includes Integrated Enterprise Access Control Platform MonitorCast	✓	✓